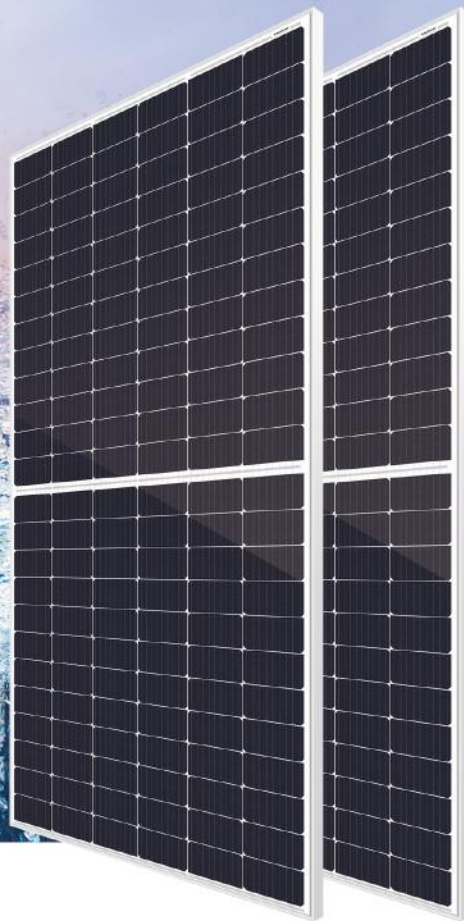


Haitai TaiJi 166

HTM460MH3-72

Monofacial high efficiency mono PV module



PRODUCT FEATURES



High Efficiency

The multi-busbar half-cut technology can boost energy density to deliver higher output.



Low Degradation

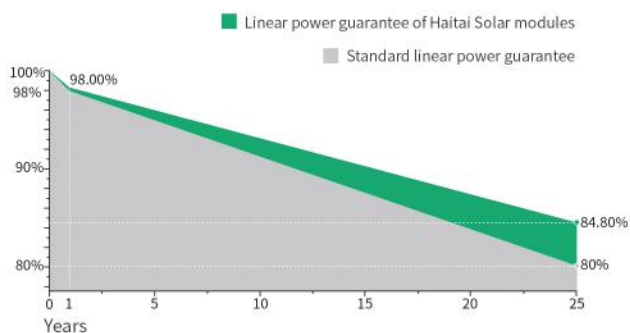
First-year degradation is less than 2.0%, with linear degradation of 0.55% per year for 25 years.



High ROI

Effectively reducing BOS costs to achieve lower LCOE and enhanced project profitability.

LINEAR PERFORMANCE WARRANTY



12 product warranty



25 linear power warranty



0.55 Linear attenuation of 0.55% per year within 25 years

CERTIFICATES

· IEC 61215, IEC 61730



Electrical Data (STC)

Maximum Power (Pmax/W)	460
Tolerance	±3%
Open Circuit Voltage (Voc/V)	49.88
Short Circuit Current (Isc/A)	11.67
Voltage at Maximum Power (Vmp/V)	41.34
Current at Maximum Power (Imp/A)	11.13
Module Efficiency (%)	21.16
Operating Temperature	-40° C~+85° C
Maximum System Voltage	1000V
STC (Standard Testing Conditions): Irradiance 1000W/m ² , Cell Temperature 25°C, AM1.5	

Electrical Data (NMOT)

Maximum Power (Pmax/W)	344
Open Circuit Voltage (Voc/V)	45.81
Short Circuit Current (Isc/A)	9.74
Voltage at Maximum Power (Vmp/V)	38.14
Current at Maximum Power (Imp/A)	9.02

NMOT (Nominal Module Operating Temperature): Irradiance 800W/m², Ambient Temperature 20°C, AM1.5, Wind Speed 1m/s.

Mechanical Data

Cell Type	166×83mm Mono
Cell Orientation	144(6×24)
Module Dimensions	2094×1038×35mm
Weight	24.0kg
Glass	3.2mm high transmittance, reinforced glass
Backsheet	Anti-aging film
Frame Material	Anodized aluminum alloy
Junction Box	Protection class IP68
Cable	4.0 mm ² positive pole: 250 mm negative pole: 300 mm wire length can be customized
Connector	Stäubli Electrical: Type PV-KST4-EVO2/XY-UR; PV-KBT4-EVO2/XY-UR Jiangsu Holysun: Type C1 or C2 Jiangsu TianSheng: Type TS01 or TS02
Maximum Series Fuse Rating	20A
Fire Safety Class	Class C

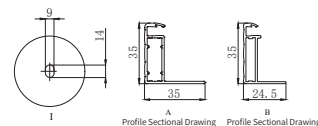
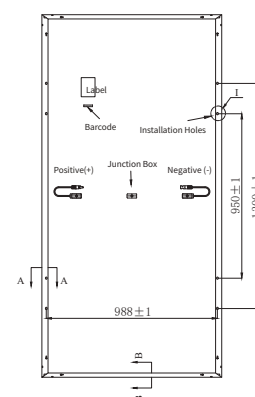
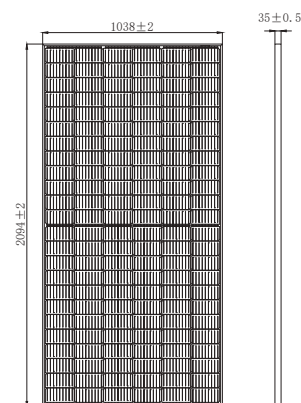
Temperature Coefficients

Temperature Coefficient (Pm)	-0.350%/°C
Temperature Coefficient (Voc)	-0.270%/°C
Temperature Coefficient (Isc)	0.048%/°C
NMOT (Nominal Module Operating Temperature)	41±3°C

Packaging

Transportation methods	Number of modules per cabinet	Number of modules per pallet
40HQ container	682pcs	31pcs+31pcs

Module Dimensions (mm)



I-V Curve

